

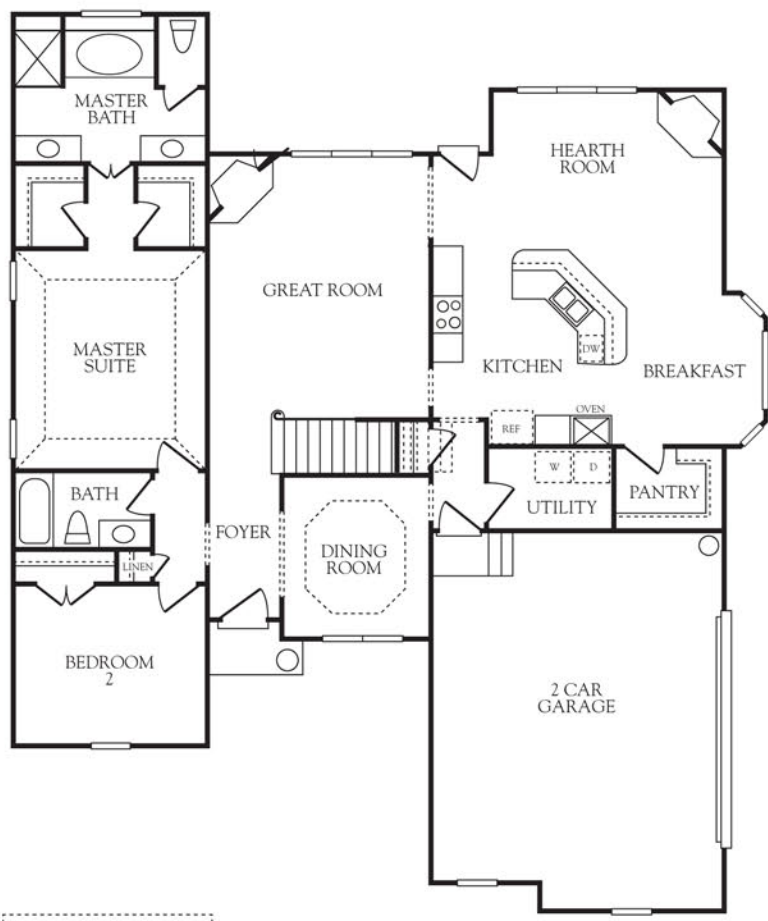
BALFOUR



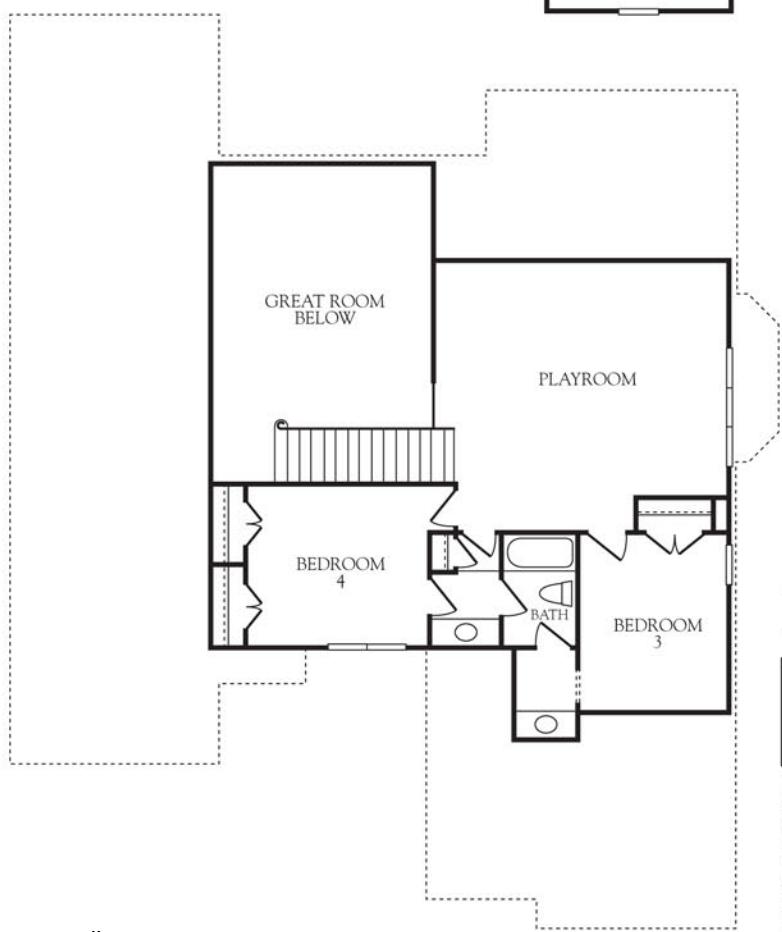
Furnberry

HOMES

First Floor



Second Floor



4 Bedrooms
3 Baths

First floor:	1,940 sq.ft.
Second floor:	917 sq.ft.
Total heated area:	2,857 sq.ft.

This represents Elevation A only. Other elevations may change the interior room dimensions and size of home. Please see sales representative for details. Square footage calculated from outside exterior walls. Second floor two story space counted as half. All calculations are approximate.

"PLANS SUBJECT TO CHANGE."